

Improve Your Sample Management Beyond the Barcode

Sample Profile

Medical Courier Elite Module

A screenshot of the 'MC Elite' software interface. The window title is 'MC Elite'. The main heading is 'Scan Specimens'. Below the heading is a 'Scan:' label and a 'Clear' button. A list of specimen types is shown with checkboxes and input fields: 'Count' (checked, value 6, 'Close' button), 'Stat' (unchecked), 'Biopsy' (checked), 'Frozen' (unchecked), 'Red Tops' (checked, value 2), 'Purple Tops' (checked, value 3), and 'Blue Tops' (unchecked). At the bottom of the window are 'Show Help', '<<', and '>>' buttons, and a blue bar with 'File', a keyboard icon, and 'Tools'.

Defining Specimens

When 100 bags become 700 samples, your laboratory needs to know more than the barcode information; you need to know the number and types of samples coming to your laboratory.

With MCE Sample Profile, gain the ability to identify samples by quantity and type for each customer location. Simple, clear input screens allow your courier to quickly record the count and classify samples in the outreach specimen bags—whether they are clinical or anatomical specimens—and enter the data into the handheld device.

MCE Sample Profile, offers in-the-field tracking for better sample identification: accuracy beyond the barcode. The end result is enhanced workflow—the lab can quickly adjust staff on hand to process specimens. MCE Sample Profile adds traceability and accountability throughout the logistic process.

"We put a premium on accuracy, because our business depends on it. But it wasn't enough to be accurate. We had to have the accountability to prove to our clients that we handled their specimens accurately."

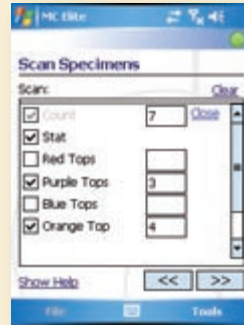
—Kelly, Director of Laboratory Services, Innovative Pathology Services

MCE
Medical Courier Elite™
BY TAYLOR DATA SYSTEMS

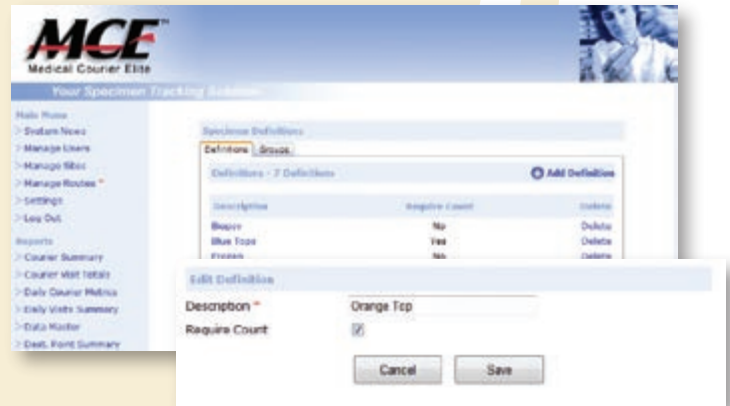
Sample Profile Process

- 1 Specimen Profile Setup**
 Customize the sample profile for each customer location (e.g., biopsy, stat, red top) during initial setup by administrator. The courier is then ready to track both quantity and type of samples picked up.
- 2 At Client Site**
 Upon arrival, couriers scan barcode ID and check off sample type and quantity within each specimen bag. Enhance in-the-field sample tracking with an added layer of identification.
- 3 Return to Laboratory**
 Simply download Sample Profile data to management reports at the end of the day.
- 4 Management Reports**
 Provide documentation through a database record of samples picked up by the courier.

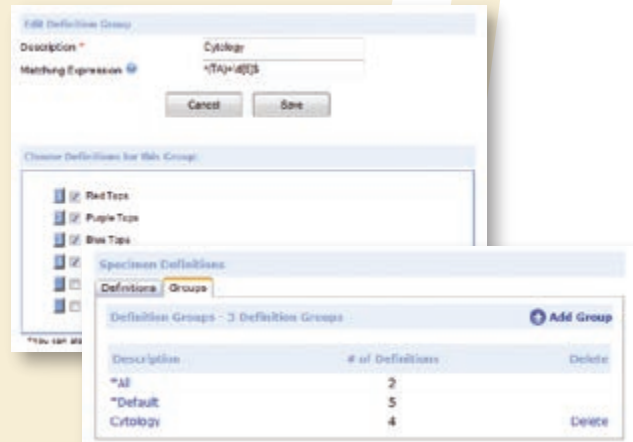
With MCE Sample Profile, the result is in-the-field tracking, enhanced traceability, and documentation of outreach samples brought into the laboratory for processing.



Handheld Scan Specimens Window



Sample Definitions



Sample Definition Groups

Why Use Sample Profile?

Advances Sample Protection	Added protection to outreach samples, defines sample type and quantity in addition to barcode information.
Enhanced Workflow	Ensure sufficient staff are on hand to process specimens promptly. Know when to call in specialized staff to handle high complexity testing.
Accountability and Accuracy	Easily answer client questions with quick visual check of specimen bags—simplify troubleshooting.
Process Documentation	Documentation of samples enhances traceability.